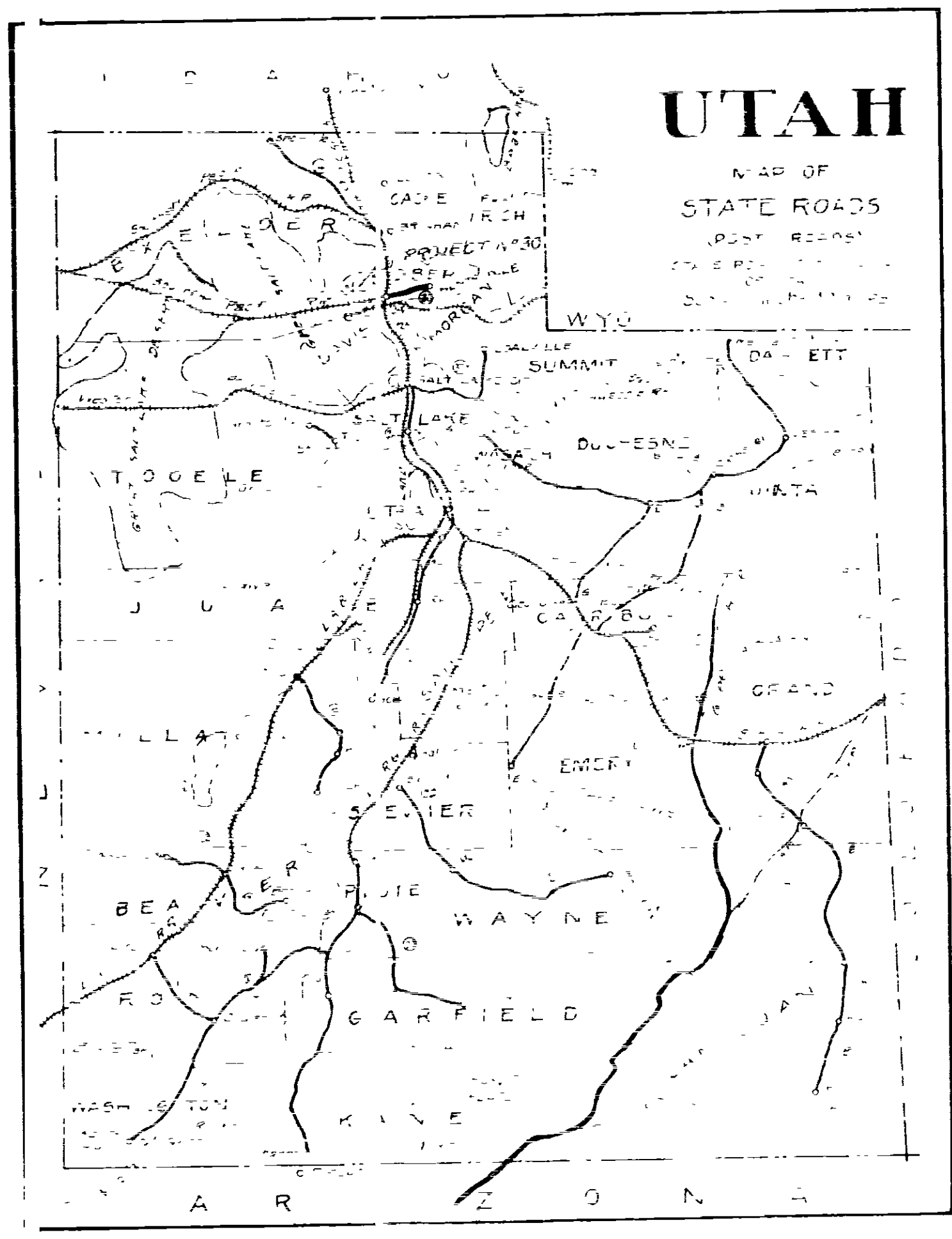


UTAH	UTAH	ER-12	POST WAR	1	1
------	------	-------	----------	---	---

STATE OF UTAH
STATE ROAD COMMISSION OF UTAH

PLAN AND PROFILE OF PROPOSED
FEDERAL AID POST ROAD PROJECT
WEBER COUNTY
OGDEN-HUNTSVILLE

SCALES { PLAN 1"=50'
 PROFILE { VER. 1"=10'
 HOR. 1"=50'
 E.R. 12 LENGTH 0.100 MILE



INDEX TO SHEETS E.R. No. 12

SHEET	DESCRIPTION	DWG. NO.	STA.
1	Title Sheet		
2	Typical Section		
3-4	Plan and Profile		

APPROVED.....1953
 STATE ROAD COMMISSION OF UTAH
 ASST. CHIEF ENGINEER

DEPARTMENT OF COMMERCE
 BUREAU OF PUBLIC ROADS

RECOMMENDED FOR APPROVAL:

 DISTRICT ENGINEER DATE

APPROVED:

 DIVISION ENGINEER DATE

CABINET #
 Scanned 8-14-98

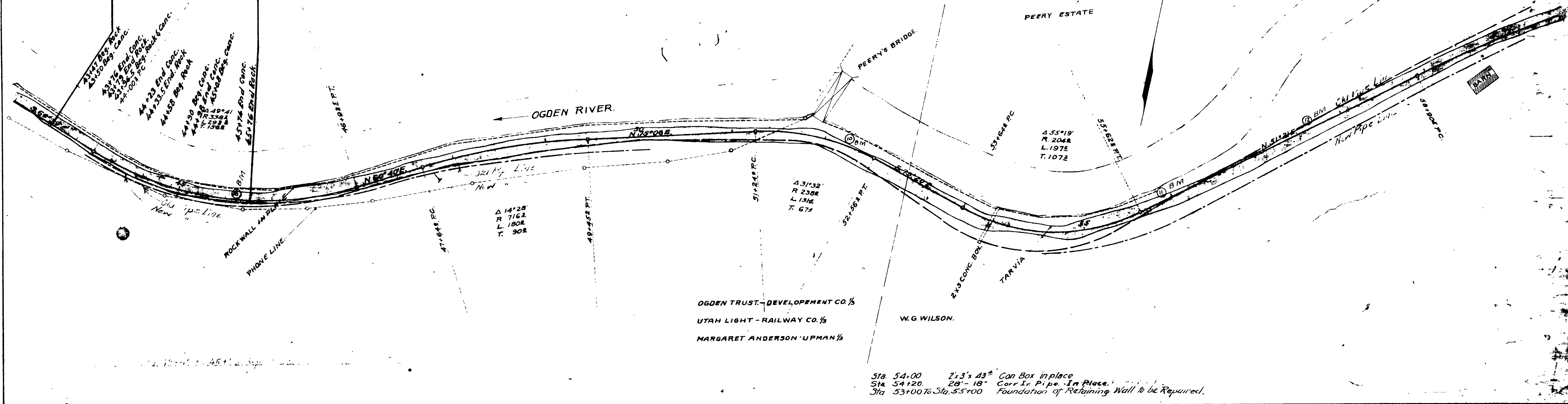
43+47 BEG. E.R. 12 } First Sec.
 45+76 END E.R. 12 }
 76+50 BEG. E.R. 12 } Second Sec.
 79+50 END E.R. 12 }

STATE	PROJ. NO.	YEAR	SHEET NO.	TOTAL SHEETS
UTAH	ER-12	1920	3	28

43+47
BEG. PROJ.
No. ER-12
(First Sec.)

45+76
END PROJ.
No. ER-12
(First Sec.)

43+47 Beg. Rock
43+50 Beg. Conc.
43+56 End Conc.
43+58 End Conc.
43+58 Beg. Rock
44+23 End Conc.
44+33.5 End Rock
44+38 Beg. Rock
44+49 End Conc.
44+50 End Conc.
44+50 Beg. Conc.
44+54 End Conc.
45+76 End Rock



M.S. Crover
M.S. Crover
M.S. Crover

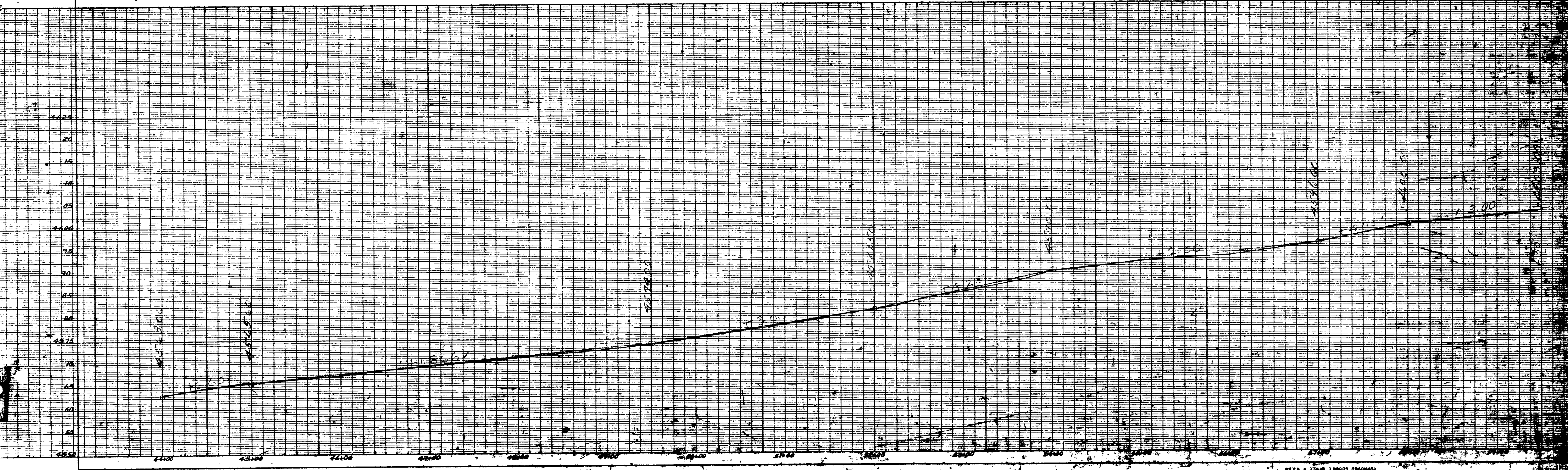
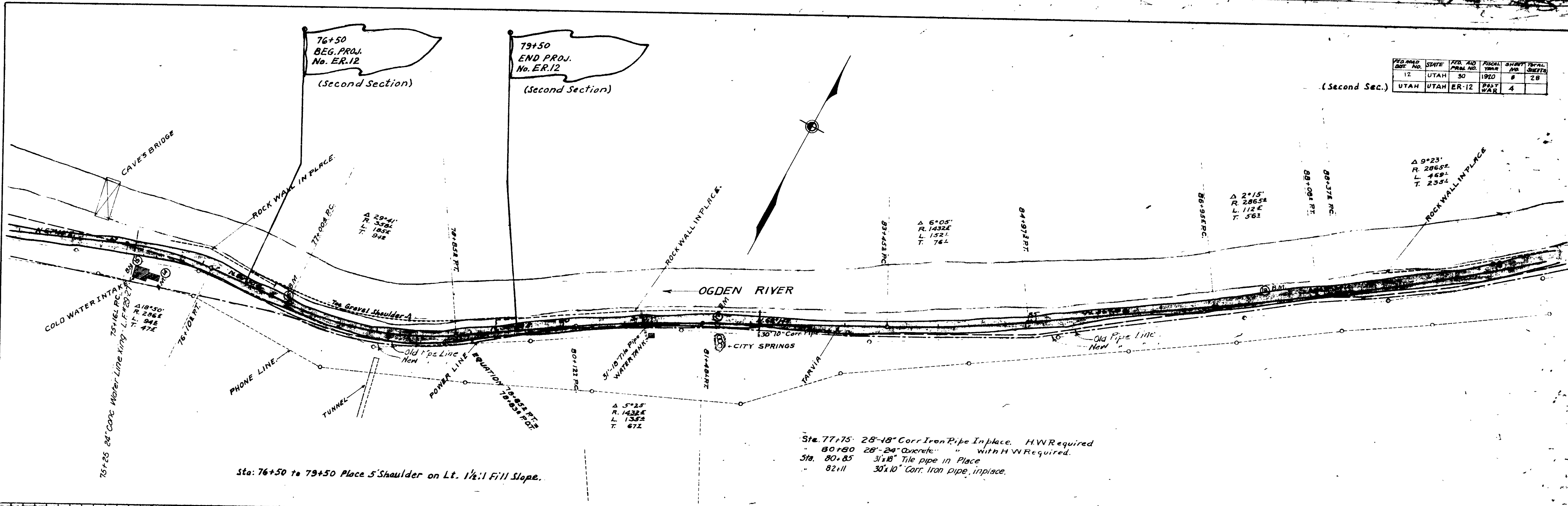


FIG. NO.	STATE	PROJ. NO.	SHEET NO.	TOTAL SHEETS
12	UTAH	50	1920	28
		ER-12	PART 4	

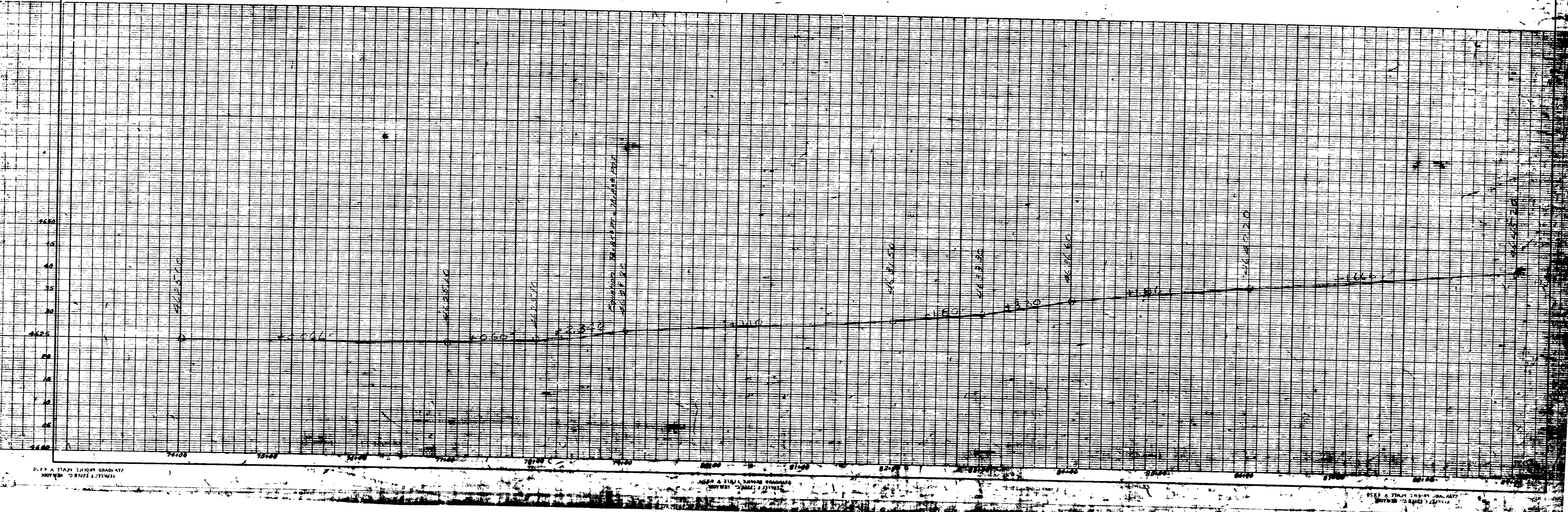
(Second Sec.)

76+50
BEG. PROJ.
No. ER.12
(Second Section)

79+50
END PROJ.
No. ER.12
(Second Section)



M.S. CRYSTON
W.S. M.
grade



KERNER & ELLER C. ENGINEERS
215 GRAND AVENUE, SALT LAKE CITY, UTAH